



Waqf Management System of India

July 2014 Updates

An e-Governance Initiative under the aegis of Ministry of Minority Affairs, Govt. of India

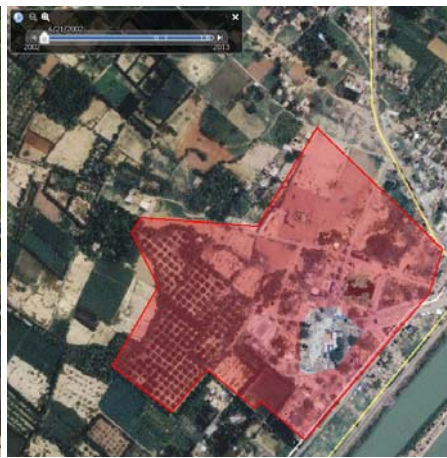
Detecting encroachments on Waqf Properties made easy by WAMSI Systems.

Another feature has been introduced in WAMSI Systems to detect encroachments on Immovable Waqf Properties over a period of time using Historical Satellite Imageries, as an extension to GIS capabilities already integrated into WAMSI On-line Systems.

To showcase a Proof of Concept (PoC) of this feature, a sample Immovable Waqf Property **Waqf Dargah Hazrat Makhdoom Allahudeen Ali Ahamad Sabir Saheb** at Peerane Kaliyar Sharif, District Haridwar State Uttarakhand vide **Waqf/ Prop.ID: UKHDO373/ DH001** has been chosen.

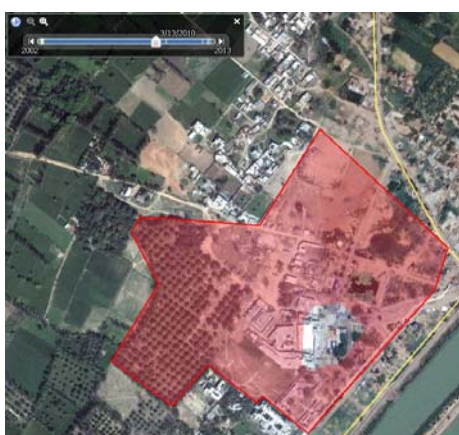


Main Dargah Sanctum



Satellite Image dated 21-JUNE-2002

GIS Reports generated through WAMSI System highlighting various changes in the boundaries as well as inside the campus through three Historical Satellite Imageries dated 21-JUN-2002, 13-MAR-2010 and 28-DEC-2013 w.r.t. Superimposed layout of the same Waqf Property.



Satellite Image dated 13-MAR-2010



Satellite Image dated 28-DEC-2013

Now, it is concluded that GIS capabilities introduced and closely integrated into the WAMSI Systems will cater to the most challenging aspect of Waqf Management i.e., preventing the encroachment of Waqf Properties.



Hon'ble Minister's Visitors



Dr. Najma A. Heptulla, Union Minister of Minority Affairs, met the three-member delegation led by Ms. Lakshmi Puri, Assistant Secretary General and Deputy Executive Director of UN Women in New Delhi on July 21, 2014 and discussed issues related to socio-economic development of minority women in India. It has been decided in the meeting that the Ministry will strengthen partnership with UN Women to institutionalize gender and rights based approach in the schemes/ programmes of the Ministry to empower women belonging to minority communities. The exchange programmes under South-South Cooperation and participation of the Ministry in various international fora related to minorities will also be undertaken in consultation with the Ministry of External Affairs.



Later, Representative of UNICEF Mr. Louis-Georges Arsenault also met the Minister and issues like quality of elementary education, nutrition and health of minority children, issues related to girl child and total sanitation campaign were discussed. It was suggested that the Ministry and UNICEF may jointly develop a strategy for advocacy and convergence with schemes/ programmes of the Government of India.

Waqf Records Computerization Project - Data Ingestion Progress as on July 31, 2014

S.No.	State/UT Waqf Board	CCF Funds Sanction Date	Waqf Estates or Properties ? (Only for Reference)	Records in WAMSI REGISTRATION Module			Records in WAMSI RETURN Module	Records in WAMSI LEASING Module	Records in WAMSI LITIGATION Module		Pre-Digitization Work	Records in WAMSI-DMS System	Added Imm.Properties w.r.t. last Month		
				Waqf Estates	Imm.Prop.	Mov.Prop.			External	Internal					
1	Andaman & Nicobar	October 19, 2010	84	49 (58.33 %)	83						(0.00 %)	(0.00 %)	83	0	
2	Andhra Pradesh	June 17, 2011	35703	33603 (94.12 %)	6786		1			5786 (16.21 %)	178 (0.50 %)	482	6304		
3	Assam	March 09, 2010	300	300 (100.00 %)	338	394	11	7		274 (91.33 %)	269 (89.67 %)	338	0		
4	Bihar (Shia)	May 24, 2010	227	220 (96.92 %)	572	16	20		1	219 (96.48 %)	219 (96.48 %)	572	0		
5	Bihar (Sunni)	May 24, 2010	2426	2426 (100.00 %)	3493	18	41	7		2421 (99.79 %)	1401 (57.75 %)	3483	10		
6	Chandigarh		33	33 (100.00 %)	34					(0.00 %)	(0.00 %)	34	0		
7	Chhattisgarh	March 19, 2010	800	800 (100.00 %)	2006		31		87	276	794 (99.25 %)	794 (99.25 %)	2006	0	
8	Delhi	July 12, 2010	1962	1962 (100.00 %)	849						(0.00 %)	(0.00 %)	849	0	
9	Gujarat	July 04, 2012	11681	6797 (58.19 %)	16086	4157				6972 (59.69 %)	(0.00 %)	14601	1485		
10	Haryana	May 24, 2010	12511	12511 (100.00 %)	13440			869		2141 (17.11 %)	1500 (11.99 %)	13431	9		
11	Himachal Pradesh	March 19, 2010	1099	945 (85.99 %)	2025					70 (6.37 %)	36 (3.28 %)	2025	0		
12	Jammu & Kashmir	January 21, 2011	214	1 (0.47 %)	1					(0.00 %)	(0.00 %)	1	0		
13	Karnataka	March 19, 2010	27548	23032 (83.61 %)	20116					14000 (50.82 %)	7500 (27.23 %)	20116	0		
14	Kerala	May 24, 2010	8552	8552 (100.00 %)	35770		3		435	338	8322 (97.31 %)	8322 (97.31 %)	35594	176	
15	Lakshadweep	August 03, 2010	342	342 (100.00 %)	914		567		4	12	339 (99.12 %)	339 (99.12 %)	914	0	
16	Madhya Pradesh	July 12, 2010	14849	14849 (100.00 %)	20723	227	645	134	426	2904	14702 (99.01 %)	14702 (99.01 %)	20721	2	
17	Maharashtra	March 19, 2010	7142	7142 (100.00 %)	18589	71	3173	0	7		6474 (90.65 %)	6135 (85.90 %)	18443	146	
18	Manipur	September 16, 2010	930	683 (73.44 %)	701						678 (72.90 %)	658 (70.75 %)	699	2	
19	Meghalaya	January 24, 2011	43	43 (100.00 %)	53	51	56				18 (41.86 %)	18 (41.86 %)	53	0	
20	Odisha	March 19, 2010	3729	3142 (84.26 %)	5579						845 (22.66 %)	845 (22.66 %)	5397	182	
21	Puducherry	May 24, 2010	45	45 (100.00 %)	671	254	201	90	1		45 (100.00 %)	45 (100.00 %)	671	0	
22	Punjab	March 19, 2010	24540	24540 (100.00 %)	34131			467			4000 (16.30 %)	(0.00 %)	34131	0	
23	Rajasthan	December 29, 2010	18950	18359 (96.88 %)	23150		218		19		17461 (92.14 %)	4005 (21.13 %)	23150	0	
24	Tamil Nadu	March 19, 2010	7425	7425 (100.00 %)	53105	8561	6213	1435	381	177	7376 (99.34 %)	7293 (98.22 %)	52945	160	
25	Tripura	March 19, 2010	1869	1675 (89.62 %)	2356	50	14	1	2		1869 (100.00 %)	800 (42.80 %)	2356	0	
26	Uttarakhand	November 09, 2010	2054	2033 (98.98 %)	4253		119		2		2020 (98.34 %)	1500 (73.03 %)	4239	14	
27	Uttar Pradesh (Sunni)	March 19, 2010	123115	13637 (11.08 %)	13387	2					14100 (11.45 %)	4700 (3.82 %)	13387	0	
28	West Bengal	March 19, 2010	6744	5838 (86.57 %)	25610	1		6	2		5850 (86.74 %)	1800 (26.69 %)	24670	940	
			GRAND TOTAL	314917	190984 (60.65 %)	304821	13408	11695	3021	1355	3726	116776 (37.08 %)	63059 (20.02 %)	ADDED->	9430